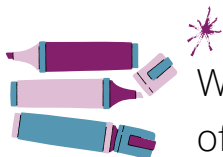


### WIFI



Wi-Fi is in a fixed location like a building or in your home. It allows your device to connect to internet wirelessly through a router



Wi-Fi can handle a lot of devices connecting at the same time, such as multiple PCs, phones and other devices.



Wi-Fi tends to be a faster connection but it also has limited range because you need to be in range of the router.

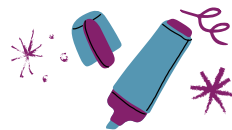


Public Wi-Fi can be risky, as you don't know who else has access to them. Home Wi-Fi is more secure but you must make sure it is secured with a password.

### DATA



Data, or mobile data, is transportable and can be accessed in most places with a suitable device. You access the internet via your mobile signal



Usually, you pay for mobile data per device, but it is possible to share data by making a hot spot.



Make sure you have a data plan for your devices as it's very expensive without one



Data is more secure in public. While nothing on the internet is 100% secure, data connections are harder for others to get into.

### References

<https://us.norton.com/internetsecurity-wifi-how-safe-is-surfing-on-4g-vs-wi-fi.html>  
<https://www.actiontec.com/pros-and-cons-to-using-wifi-and-cellular-internet/>

